



International Association of Certified Home Inspectors

Visit us online at NACHI.ORG

World Headquarters
1750 30th St Ste 301
Boulder, CO 80301

Mock Inspection Report

4819 South 6th Street, Louisville, KY, USA

Mar 11, 2025

Performed by **David Smith**

This is a mock inspection report to demonstrate that the inspector has performed an inspection according to the [InterNACHI® Standards of Practice](#).

Roof

View the InterNACHI® “Roof” inspection standard at <https://www.nachi.org/sop.htm#roof>.

Items Inspected



International Association of Certified Home Inspectors

Visit us online at NACHI.ORG

World Headquarters
1750 30th St Ste 301
Boulder, CO 80301

Roof-Covering Materials

No Defect(s) Observed

Inspected from the ground with binocular.



International Association of Certified Home Inspectors

Visit us online at NACHI.ORG

World Headquarters
1750 30th St Ste 301
Boulder, CO 80301





International Association of Certified Home Inspectors

Visit us online at [NACHI.ORG](https://www.nachi.org)

World Headquarters
1750 30th St Ste 301
Boulder, CO 80301

Gutters

No Defect(s) Observed

Downspouts

No Defect(s) Observed

Vents, Flashing, Skylights, Chimney, and Other Roof Penetrations

Minor Defect

Flashing is popped up and needs to be nailed down by a qualified roofing contractor.





International Association of Certified Home Inspectors

Visit us online at NACHI.ORG

World Headquarters
1750 30th St Ste 301
Boulder, CO 80301

General Structure of the Roof (from the readily accessible panels, doors or stairs)

No Defect(s) Observed

System Descriptions

The Type of Roof-Covering Materials

- Asphalt Shingle

Reported Observations

Did you observe any indications of active roof leaks?

Not Observed



International Association of Certified Home Inspectors

Visit us online at NACHI.ORG

World Headquarters
1750 30th St Ste 301
Boulder, CO 80301

Exterior

View the InterNACHI® “Exterior” inspection standard at
<https://www.nachi.org/sop.htm#exterior>.

Items Inspected



International Association of Certified Home Inspectors

Visit us online at NACHI.ORG

World Headquarters
1750 30th St Ste 301
Boulder, CO 80301

Exterior Wall-Covering Materials

Minor Defect

Aluminum siding



International Association of Certified Home Inspectors

Visit us online at NACHI.ORG

World Headquarters
1750 30th St Ste 301
Boulder, CO 80301





International Association of Certified Home Inspectors

Visit us online at NACHI.ORG

World Headquarters
1750 30th St Ste 301
Boulder, CO 80301

Eaves, Soffits and Fascia

No Defect(s) Observed

Windows (a representative number)

No Defect(s) Observed



International Association of Certified Home Inspectors

Visit us online at NACHI.ORG

World Headquarters
1750 30th St Ste 301
Boulder, CO 80301

All Exterior Doors

No Defect(s) Observed



International Association of Certified Home Inspectors

Visit us online at NACHI.ORG

World Headquarters
1750 30th St Ste 301
Boulder, CO 80301





International Association of Certified Home Inspectors

Visit us online at [NACHI.ORG](https://www.nachi.org)

World Headquarters
1750 30th St Ste 301
Boulder, CO 80301

Flashing and Trim

No Defect(s) Observed

Adjacent Walkways and Driveways

No Defect(s) Observed

Stairs, Steps, Stoops, Stairways and Ramps

No Defect(s) Observed

Porches, Patios, Decks, Balconies and Carports

No Defect(s) Observed

Railings, Guards and Handrails

No Defect(s) Observed



International Association of Certified Home Inspectors

Visit us online at NACHI.ORG

World Headquarters
1750 30th St Ste 301
Boulder, CO 80301

Vegetation, Surface Drainage, Retaining Walls and Grading of the Property (where they may adversely affect the structure due to moisture intrusion)

Cosmetic Defect

Recommend trimming tree back from house.



System Descriptions

The Type of Exterior Wall-Covering Materials

- Aluminum Siding



International Association of Certified Home Inspectors

Visit us online at NACHI.ORG

World Headquarters
1750 30th St Ste 301
Boulder, CO 80301

Reported Observations

Did you observe any improper spacing between intermediate balusters, spindles or rails?

Not Observed



**International Association
of Certified Home Inspectors**

Visit us online at [NACHI.ORG](https://www.nachi.org)

World Headquarters
1750 30th St Ste 301
Boulder, CO 80301

Basement, Foundation, Crawlspace & Structure

View the InterNACHI® “Basement, Foundation, Crawlspace & Structure” inspection standard at <https://www.nachi.org/sop.htm#basement>.

Items Inspected

Foundation

Cosmetic Defect



Basement

Cosmetic Defect



International Association of Certified Home Inspectors

Visit us online at NACHI.ORG

World Headquarters
1750 30th St Ste 301
Boulder, CO 80301

Crawlspace

No Defect(s) Observed



Structural Components

No Defect(s) Observed

System Descriptions



International Association of Certified Home Inspectors

Visit us online at NACHI.ORG

World Headquarters
1750 30th St Ste 301
Boulder, CO 80301

The Type of Foundation

- Poured concrete and block.

The Location of the Access to the Under-Floor Space

- South side of house



Reported Observations



International Association of Certified Home Inspectors

Visit us online at [NACHI.ORG](https://www.nachi.org)

World Headquarters
1750 30th St Ste 301
Boulder, CO 80301

Did you observe indications of wood in contact with or near soil?

Not Observed

Did you observe indications of active water penetration?

Not Observed

Did you observe indications of possible foundation movement?

Not Observed

Did you observe cutting, notching or boring of framing members?

Not Observed



International Association of Certified Home Inspectors

Visit us online at [NACHI.ORG](https://www.nachi.org)

World Headquarters
1750 30th St Ste 301
Boulder, CO 80301

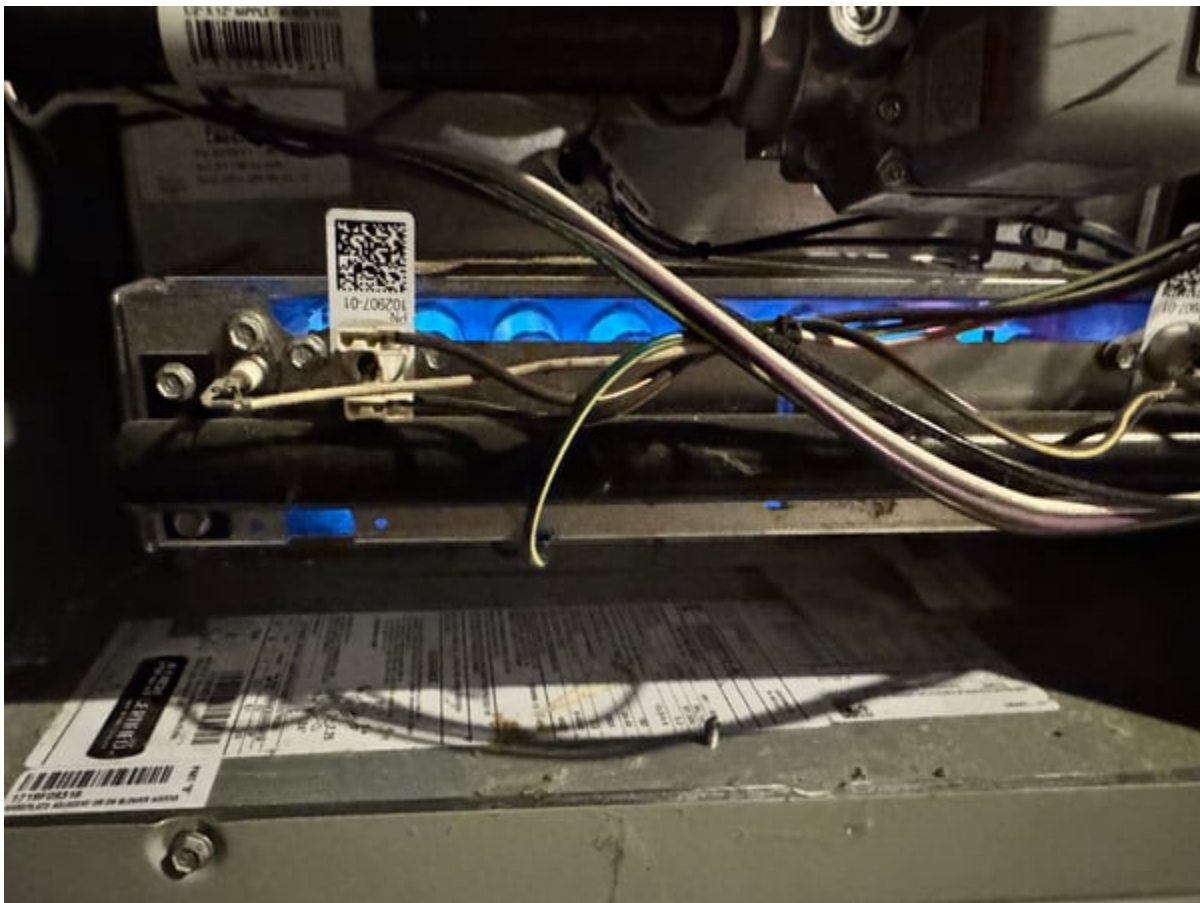
Heating

View the InterNACHI® “Heating” inspection standard at <https://www.nachi.org/sop.htm#heating>.

Items Inspected

Heating System (using normal operating controls)

No Defect(s) Observed



System Descriptions



International Association of Certified Home Inspectors

Visit us online at NACHI.ORG

World Headquarters
1750 30th St Ste 301
Boulder, CO 80301

Location of the Thermostat for the Heating System

- Living room

The Energy Source

- natural gas.

The Heating Method

- forced air gas furnace.

Reported Observations

Did you observe any heating system that did not operate?

Not Observed

Did you observe that the heating system was
inaccessible?

Not Observed



International Association of Certified Home Inspectors

Visit us online at [NACHI.ORG](https://www.nachi.org)

World Headquarters
1750 30th St Ste 301
Boulder, CO 80301

Cooling

View the InterNACHI® “Cooling” inspection standard at
<https://www.nachi.org/sop.htm#cooling>.

Items Inspected

Cooling System (using normal operating controls)

Not Inspected | **Unsafe**

System Descriptions

The Location of the Thermostat for the Cooling System

- 39 degree temp outside air temp.



International Association of Certified Home Inspectors

Visit us online at NACHI.ORG

World Headquarters
1750 30th St Ste 301
Boulder, CO 80301

The Cooling Method

- entral air conditioning system.



Reported Observations

Did you observe any cooling system that did not operate?

Not Observed



International Association of Certified Home Inspectors

Visit us online at NACHI.ORG

World Headquarters
1750 30th St Ste 301
Boulder, CO 80301

Did you observe that the cooling system was
inaccessible?

Not Observed



International Association of Certified Home Inspectors

Visit us online at [NACHI.ORG](https://www.nachi.org)

World Headquarters
1750 30th St Ste 301
Boulder, CO 80301

Plumbing

View the InterNACHI® “Plumbing” inspection standard at <https://www.nachi.org/sop.htm#plumbing>.

Items Inspected

Main Water Supply Shut-Off Valve

No Defect(s) Observed

Main Fuel Supply Shut-Off Valve

No Defect(s) Observed

Water Heating Equipment (including the energy source, venting connections, temperature/pressure-relief (TPR) valves, Watts 210 valves, and seismic bracing)

No Defect(s) Observed

Interior Water Supply (including all fixtures and faucets, by running the water)

No Defect(s) Observed

All Toilets (for proper operation by flushing)

No Defect(s) Observed



International Association of Certified Home Inspectors

Visit us online at [NACHI.ORG](https://www.nachi.org)

World Headquarters
1750 30th St Ste 301
Boulder, CO 80301

All Sinks, Tubs and Showers (for functional drainage)

No Defect(s) Observed

Drain, Waste and Vent System

No Defect(s) Observed

Drainage Sump Pumps (with accessible floats)

Not Inspected | **Not Present**

System Descriptions

Whether the Water Supply is Public or Private (based upon observed evidence)

-
- Public



International Association of Certified Home Inspectors

Visit us online at NACHI.ORG

World Headquarters
1750 30th St Ste 301
Boulder, CO 80301

The Location of the Main Water Supply Shut-Off Valve

- Basement





International Association of Certified Home Inspectors

Visit us online at NACHI.ORG

World Headquarters
1750 30th St Ste 301
Boulder, CO 80301

The Location of the Main Fuel Supply Shut-Off Valve

- South side of house.



The Location of Any Observed Fuel-Storage System

- N.A.



International Association of Certified Home Inspectors

Visit us online at NACHI.ORG

World Headquarters
1750 30th St Ste 301
Boulder, CO 80301

The Capacity of the Water Heating Equipment (if labeled)

- 50 gal



Reported Observations

Did you observe deficiencies in the water supply?

Not Observed



International Association of Certified Home Inspectors

Visit us online at NACHI.ORG

World Headquarters
1750 30th St Ste 301
Boulder, CO 80301

Did you observe deficiencies in the installation of hot and cold water faucets?

Not Observed

Did you observe active plumbing water leaks?

Not Observed

Did you observe toilets that were damaged, had loose connections to the floor, were leaking, or had tank components that did not operate?

Not Observed



International Association of Certified Home Inspectors

Visit us online at [NACHI.ORG](https://www.nachi.org)

World Headquarters
1750 30th St Ste 301
Boulder, CO 80301

Electrical

View the InterNACHI® “Electrical” inspection standard at
<https://www.nachi.org/sop.htm#electrical>.

Items Inspected

Service Drop

No Defect(s) Observed



Overhead Service Conductors and Attachment Point

No Defect(s) Observed



International Association of Certified Home Inspectors

Visit us online at NACHI.ORG

World Headquarters
1750 30th St Ste 301
Boulder, CO 80301

Service Head, Gooseneck and Drip Loops

No Defect(s) Observed

Service Mast, Service Conduit and Raceway

No Defect(s) Observed

Electric Meter and Base

No Defect(s) Observed





International Association of Certified Home Inspectors

Visit us online at [NACHI.ORG](https://www.nachi.org)

World Headquarters
1750 30th St Ste 301
Boulder, CO 80301

Service-Entrance Conductors

No Defect(s) Observed

Main Service Disconnect

No Defect(s) Observed



International Association of Certified Home Inspectors

Visit us online at NACHI.ORG

World Headquarters
1750 30th St Ste 301
Boulder, CO 80301

Panelboards and Over-Current Protection Devices (circuit breakers and fuses)

Minor Defect

One or more conductors with the insulation stripped back to far.
Recommend that its corrected by a licenced bonded electrical contractor.





International Association of Certified Home Inspectors

Visit us online at NACHI.ORG

World Headquarters
1750 30th St Ste 301
Boulder, CO 80301



Service Grounding and Bonding

No Defect(s) Observed

Switches, Lighting Fixtures and Receptacles

No Defect(s) Observed

**Ground-Fault Circuit Interrupter Receptacles and
Circuit Breakers**

No Defect(s) Observed



International Association of Certified Home Inspectors

Visit us online at NACHI.ORG

World Headquarters
1750 30th St Ste 301
Boulder, CO 80301

Presence of Smoke and Carbon-Monoxide Detectors

No Defect(s) Observed

System Descriptions

The main service disconnect's amperage rating (if labeled)

- 100 Amp





International Association of Certified Home Inspectors

Visit us online at NACHI.ORG

World Headquarters
1750 30th St Ste 301
Boulder, CO 80301

The Type of Wiring Observed

- Solid Copper

Reported Observations

Did you observe deficiencies in the integrity of the service-entrance conductors' insulation, drip loop, and vertical clearances from grade and roofs?

Not Observed

Did you observe any unused circuit-breaker panel opening that was not filled?

Not Observed

Did you observe the presence of solid conductor aluminum branch-circuit wiring, if readily visible?

Not Observed

Did you observe an issue with any tested receptacle?

Not Observed

Did you observe the absence of smoke and/or carbon monoxide detectors?

Not Observed



International Association of Certified Home Inspectors

Visit us online at [NACHI.ORG](https://www.nachi.org)

World Headquarters
1750 30th St Ste 301
Boulder, CO 80301

View the InterNACHI® “Fireplace” inspection standard at
<https://www.nachi.org/sop.htm#fireplace>.

Items Inspected

**Fireplaces and Chimneys (readily accessible
and visible portions)**

Not Inspected | **Not Present**

Lintels Above the Fireplace Openings

Not Inspected | **Not Present**

**Damper Doors (by opening and closing them, if
readily accessible and manually operable)**

Not Inspected | **Not Present**

Cleanout Doors and Frames

Not Inspected | **Not Present**

System Descriptions

The Type of Fireplace

- N.A.

Reported Observations



International Association of Certified Home Inspectors

Visit us online at NACHI.ORG

World Headquarters
1750 30th St Ste 301
Boulder, CO 80301

Did you observe evidence of joint separation, damage or deterioration of the hearth, hearth extension or chambers?

Not Observed

Did you observe manually operated dampers that did not open and close?

Not Observed

Did you observe the lack of a smoke detector in the same room as the fireplace?

Not Observed

Did you observe the lack of a carbon-monoxide detector in the same room as the fireplace?

Not Observed

Did you observe cleanouts not made of metal, pre-cast cement, or other non-combustible material?

Not Observed



International Association of Certified Home Inspectors

Visit us online at [NACHI.ORG](https://www.nachi.org)

World Headquarters
1750 30th St Ste 301
Boulder, CO 80301

Attic, Insulation & Ventilation

View the InterNACHI® “Attic, Insulation & Ventilation” inspection standard at <https://www.nachi.org/sop.htm#attic>.

Items Inspected

Insulation in Unfinished Spaces (including attics, crawlspaces and foundation areas)

Not Inspected | Inaccessible

Ventilation of Unfinished Spaces (including attics, crawlspaces and foundation areas)

No Defect(s) Observed

Mechanical Exhaust Systems in the Kitchen, Bathrooms and Laundry Area

No Defect(s) Observed

System Descriptions

The Type of Insulation Observed

- no attic access.

The Approximate Average Depth of Insulation

- N.A.



International Association of Certified Home Inspectors

Visit us online at NACHI.ORG

World Headquarters
1750 30th St Ste 301
Boulder, CO 80301

Reported Observations

Did you observe the general absence of insulation or ventilation in unfinished spaces?

Not Observed



International Association of Certified Home Inspectors

Visit us online at [NACHI.ORG](https://www.nachi.org)

World Headquarters
1750 30th St Ste 301
Boulder, CO 80301

Doors, Windows & Interior

View the InterNACHI® “Doors, Windows & Interior” inspection standard at <https://www.nachi.org/sop.htm#doors>.

Items Inspected

Doors and Windows (a representative number, by opening and closing them)

No Defect(s) Observed



Floors, Walls and Ceilings

No Defect(s) Observed



International Association of Certified Home Inspectors

Visit us online at [NACHI.ORG](https://www.nachi.org)

World Headquarters
1750 30th St Ste 301
Boulder, CO 80301

Stairs, Steps, Landings, Stairways and Ramps

No Defect(s) Observed

Railings, Guards and Handrails

No Defect(s) Observed

Garage Vehicle Doors

Not Inspected | Not Present

System Descriptions

A Garage Vehicle Door (as manually-operated or installed with a garage door opener)

- Installed with a garage door opener

Reported Observations

Did you observe improper spacing between intermediate balusters, spindles and rails for steps, stairways, guards or railings?

Not Observed



International Association of Certified Home Inspectors

Visit us online at NACHI.ORG

World Headquarters
1750 30th St Ste 301
Boulder, CO 80301

Did you observe photo-electric safety sensors that did not operate properly?

Not Observed

Did you observe any window that was obviously fogged or displayed other evidence of broken seals?

Not Observed